

£450,000

19 Argyle Crescent, Fareham, PO15 6AG

DRAFT DETAILS : We are awaiting verification from the Vendor that these details are correct



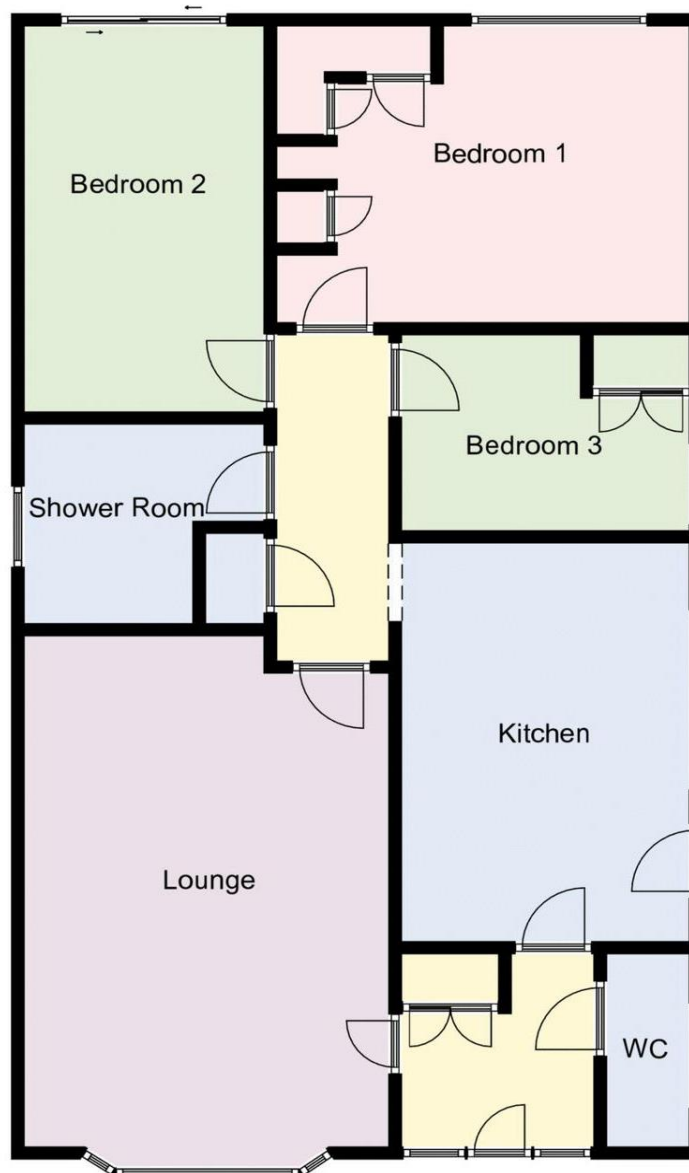
- Sought-After Location
- Detached Bungalow
- Three Bedroom
- Lounge
- Kitchen
- Shower Room
- Separate Cloakroom
- Enclosed Rear Garden
- Driveway & Garage
- NO ONWARD CHAIN!

Awaiting EPC

Property Reference : F2119

Council Tax Band: D

Floor Plans (For illustrative purposes and not drawn exactly to scale)



The Accommodation Comprises:-

Front door with obscured double glazed long-lined panels to side into:-

Entrance Hall:-

Double opening doors to storage cupboard with meters and cloaks hanging space.

Cloakroom:-

Obscured double glazed window, close-coupled wc, wash hand basin, mixer tap inset vanity unit with tiled splashback, radiator.

Lounge/Diner:-

18' 11" x 12' 11" (5.76m x 3.93m) Maximum Measurements

Bay window to front elevation, two radiators, coving to flat ceiling, fireplace with coal-effect electric fire inset with brass trim and raised hearth.



Kitchen/Breakfast Room:-

13' 4" x 10' 1" (4.06m x 3.07m) Maximum Measurements

Double glazed doors, double glazed window to side elevation, range of base and eye level units with roll-top work surfaces with tiled surround, one and a half bowl sink unit with mixer tap. Hotpoint ceramic hob with extractor over, split-level oven and grill, space for fridge/freezer, recess for washing machine, space for table and chairs, radiator, coving to flat ceiling with lighting inset.



Inner hallway:-

Cupboard with wall-mounted Worcester gas central heating boiler and slatted shelves, access to loft, smoke detector.

Bedroom 1:-

14' 7" x 10' 11" (4.44m x 3.32m) Maximum Measurements

Window overlooking garden, radiator, coving to ceiling, fitted wardrobe units with dressing table inset with pelmet lighting.



Bedroom 3:-

10' 2" x 8' 7" (3.10m x 2.61m)

Double glazed window, radiator, coving to ceiling, fitted wardrobe units.



Bedroom 2:-

14' 3" x 8' 5" (4.34m x 2.56m) Maximum Measurements

Sliding patio doors enjoying views and accessing the rear garden, radiator, coving to ceiling.



Shower Room:-

8' 11" x 6' 9" (2.72m x 2.06m)

Obscured double glazed window to side elevation, close-coupled wc with concealed cistern, wash hand basin with mixer tap inset vanity unit, pelmet lighting over, fitted mirror, shower cubicle, additional fitted storage cupboard, radiator, chrome towel rail, tiled.



Outside:-

Dwarf brick-wall to the front leading to driveway with parking for numerous vehicles, garage with up and over door and courtesy door and window to rear, two wooden gates gives pedestrian access rear enclosed garden, patio, further raised patio the side, for sitting, socialising and entertaining purposes, garden shed, formal lawns and fine array of shrubs, bushes and trees offering seclusion and privacy.



Disclaimer: These particulars are set out as a general outline in accordance with the Consumer Protection from Unfair Trading Regulations 2008 (CPR's) and Business Protection from Misleading Marketing Regulations 2008 (BPR's) only for the guidance of intending purchasers or lessees, and do not constitute any part of an offer or contract. Details are given without any responsibility, and any intending purchasers, lessees or third parties should not rely on them as statements or representations of fact, but must satisfy themselves by inspection or otherwise as to the correctness of each of them.

We have not carried out a structural survey and the services, appliances and specific fittings have not been tested. All photographs, measurements, floor plans and distances referred to are given as a guide only and should not be relied upon for the purchase of carpets or any other fixtures or fittings. Gardens, roof terraces, balconies and communal gardens as well as tenure and lease details cannot have their accuracy guaranteed for intending purchasers. Lease details, service ground rent (where applicable) are given as a guide only and should be checked and confirmed by your solicitor prior to exchange of contracts.

No person in the employment of Fenwicks Estates Ltd has any authority to make any representation or warranty whatever in relation to this property. Purchase prices, rents or other prices quoted are correct at the date of publication and, unless otherwise stated, exclusive of VAT.

Data Protection: We retain the copyright in all advertising material used to market this Property.

Money Laundering Regulations 2017: Intending purchasers will be required to produce identification documentation once an offer is accepted